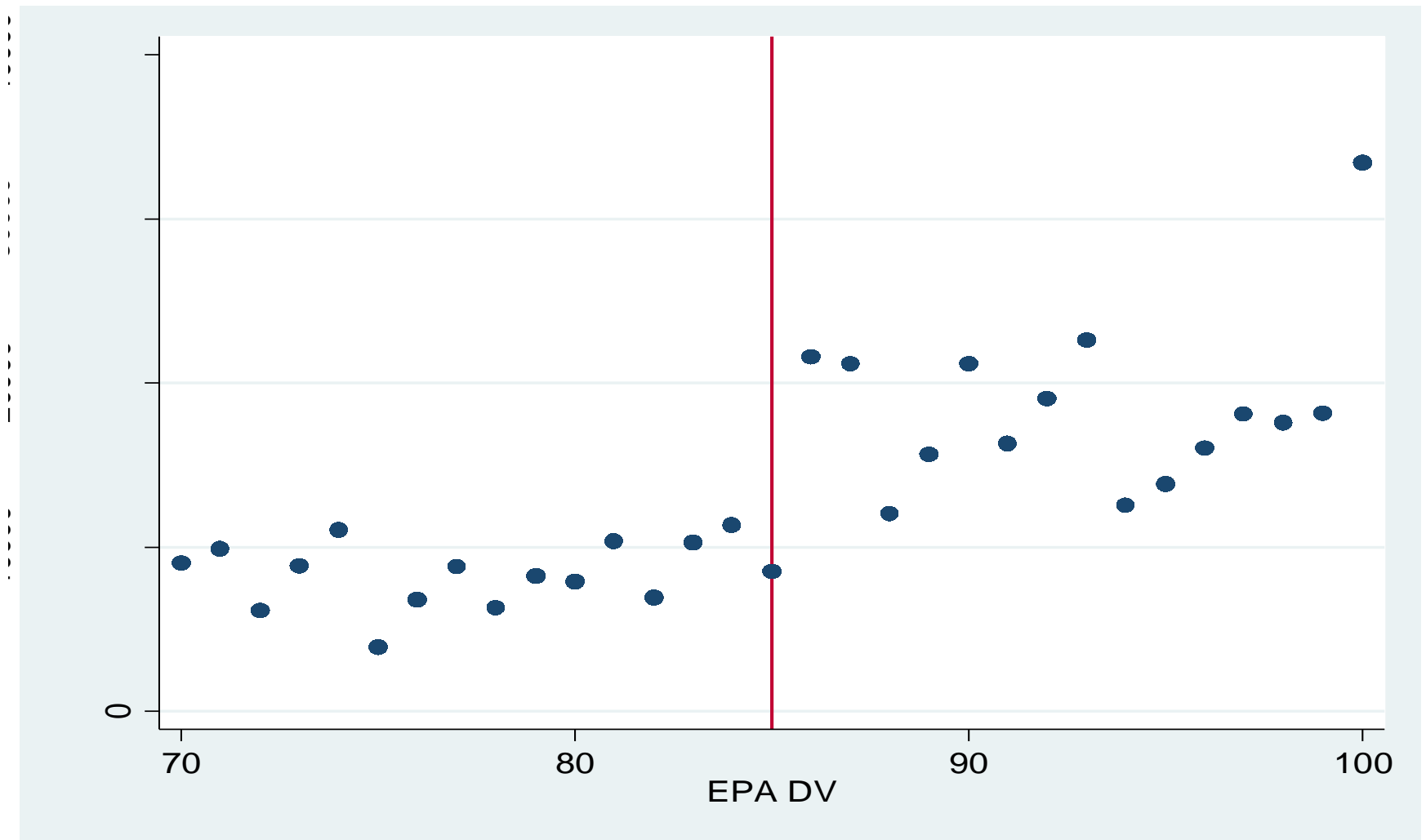


# Regression Discontinuity Design: An Environmental Economics Application

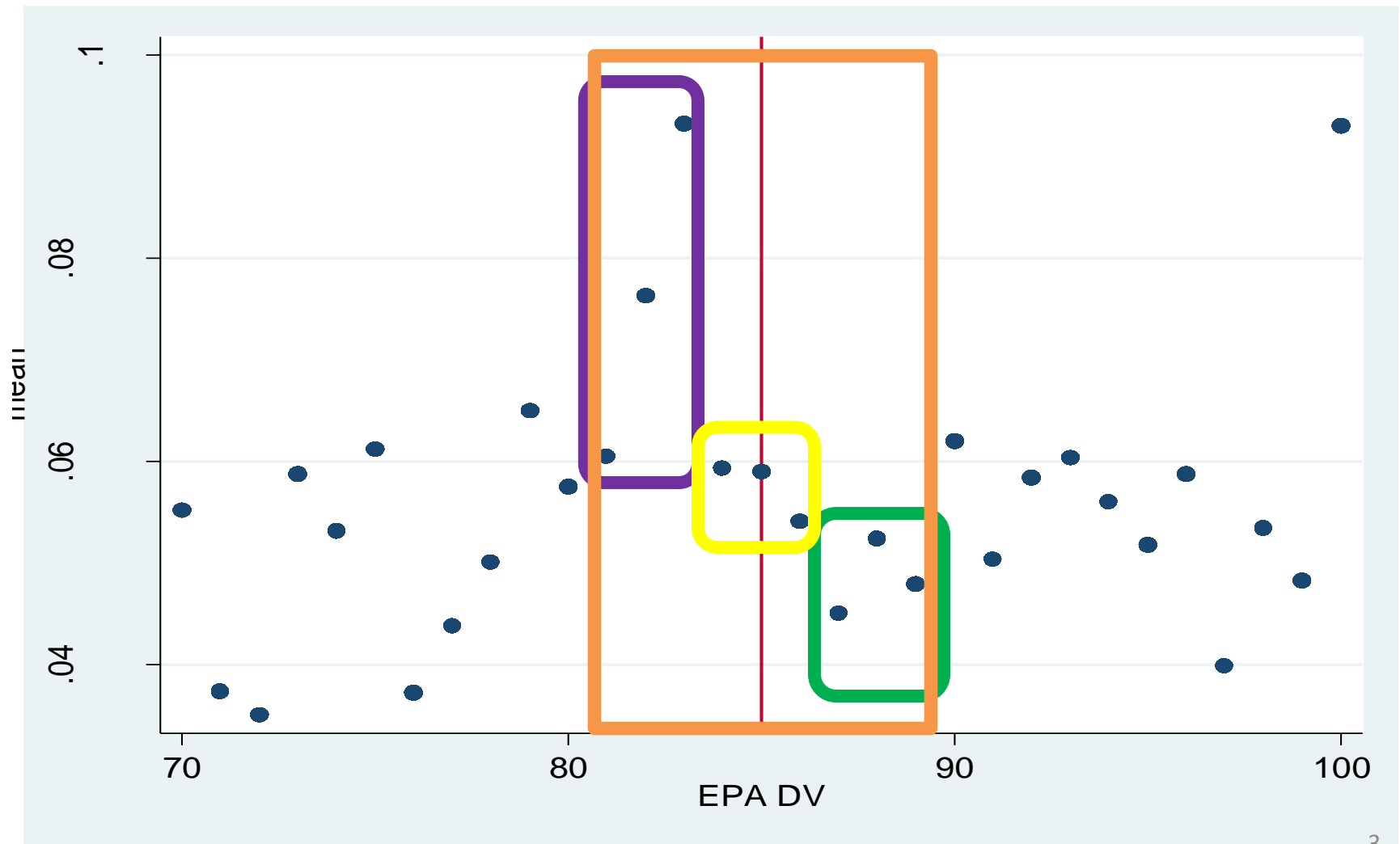
January 17, 2014 EEPR Workshop  
Presented by Jordan Stanley

This presentation provides a graphical introduction to Regression Discontinuity Design (RDD) using an example of how it can be applied to environmental policy research.

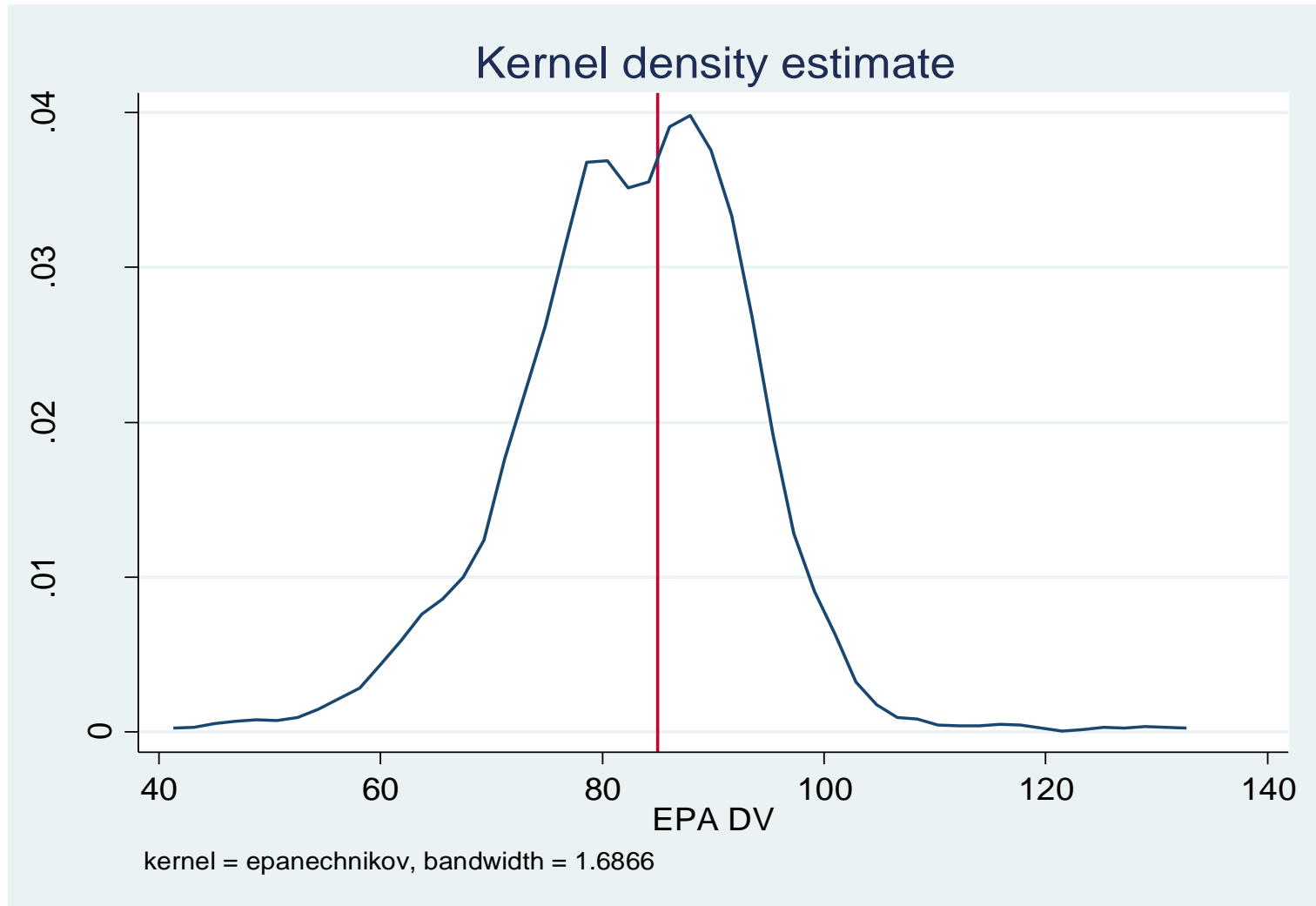
# Discontinuity: Raw Manuf. Emp.



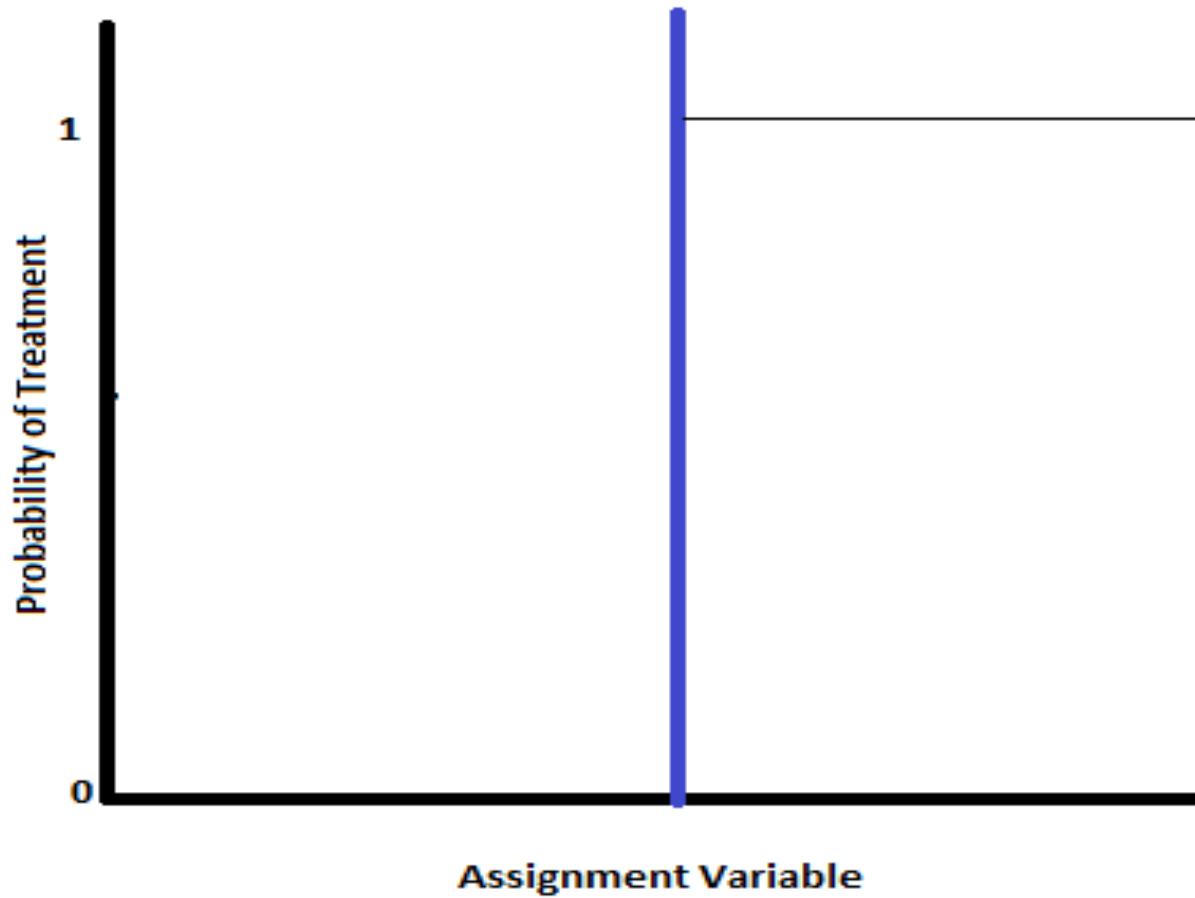
# Discontinuity: Manuf. Emp. w/ Pop.



# Concern: Selection at the Threshold



# Sharp RDD



# Fuzzy RDD

